

Laminate flooring *2024/ 2025*



econfloor

P O L S K A S P. Z O. O.

T H E N E W G E N E R A T I O N O F F L O O R S



8mm
1920
V-Groove
Wide
planks

Table of Contents

1	What are laminate floors?
2	Advantages and disadvantages of laminate flooring
8	Installation
9	Care
11	Technical data 8mm Standard
14	Technical data of 8mm V- Groove Standard
19	Technical data of 8mm V- Groove Premium
21	Technical data of 8mm V-Groove Wide planks
25	Technical data of 8mm V-Groove Herringbone
28	Technical data of 8mm

What are laminate floors?


Laminate flooring (also known as floating wood tiles in the **United States**) is a multi-layer **synthetic flooring product** bonded by a **laminating process**. Laminate flooring simulates **wood** (or sometimes stone) with a **photographic application layer** under a transparent protective layer. The inner core layer usually consists of **melamine resin and fibreboard**. There is a European standard, **EN 13329:2000**, which defines the requirements and test methods for laminate floor coverings.

Laminate flooring has gained considerable popularity, perhaps because it can be easier to install and maintain than more traditional surfaces such as **hardwood floors**. They can also have the advantage of lower cost and less installation skills than alternative flooring materials. It is quite durable, **hygienic** (several brands contain antibacterial resin) and relatively easy to maintain.



8mm
1927
V-Groove
Standard

Advantages and disadvantages of laminate flooring



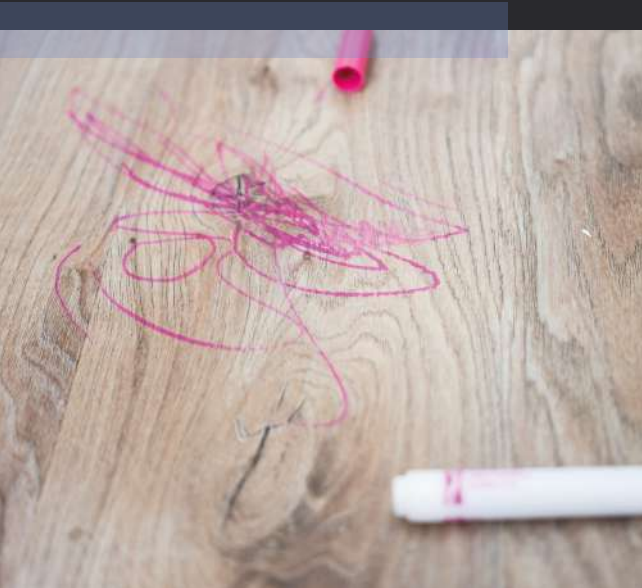
Laminate flooring is a beautiful, cost-effective flooring option that has become increasingly popular in recent years. If you're considering installing laminate flooring in your home, it's important to learn more about this type of flooring to make an informed decision. Take a look at our tips on the pros and cons of laminate flooring to see if it's the right choice for your space.



8mm
2619
V-Groove
Standard

Advantages of laminate flooring

When it comes to the advantages of laminate flooring as a building material, almost everything you have read or heard about laminate is true. In fact, it is hard to find a flooring material with more advantages than laminate. Below is a list of the benefits you can get from installing laminate flooring in your home.



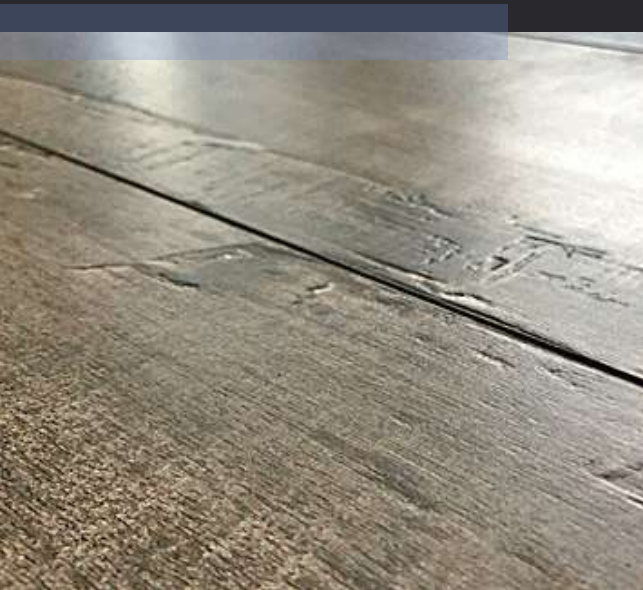
Durability

Laminate flooring is very durable, more so than hardwood, making it both pet and family friendly and a great option for high traffic areas. An additional advantage is that it can withstand exposure to sunlight for long periods of time and will not fade. The word durable now seems like an understatement.

Laminate is easier to clean

Need another reason to love laminate floors? Good, because we have one - they are easy to clean! There are no special instructions or materials needed for maintenance, Dust and spills can be easily removed with a Hoover, broom or even a slightly damp mop. Isn't it simple? With this simple maintenance you will get many long years of beautiful laminate flooring!





Appearance

In the past, it was easy to conclude that laminate was artificial wood. However, nowadays, thanks to advances in technology, it is difficult to tell the difference between laminate and hardwood. This makes it a great option for anyone who wants the look (and even feel) of hardwood and other natural materials (even stone), but without the hard and tedious work.

Laminate is cheaper than wood

It's true! Laminate flooring can look and feel like the real thing, but without the high price tag. This makes it ideal for budget-conscious homeowners. We can all choose an option that will save us some money, right?



Laminate flooring is easy to install

Another advantage of laminate flooring is that it is the easiest to install for the typical DIYer. This is largely due to the fact that laminate forms a floating floor, meaning that it does not need to be nailed, stapled or glued to the subfloor. Another reason why laminate is so easy to install is because of the way the boards are joined together.

While laminate can be great for DIYers, it's also obviously worth being safe and spending a little more to have it properly installed by a professional.

Disadvantages of laminate flooring

Like every material, it has some disadvantages. But don't worry there's not many.

Potential moisture damage to laminate flooring

Laminate flooring is made from a composite material called high-density fibreboard (HDF), which can be more susceptible to water damage than natural wood. When HDF is exposed directly to standing water, it cracks and expands. When this happens, standard laminate flooring will be damaged and will need to be replaced. Traditionally, this fact has limited the areas where laminate can be installed, excluding areas such as bathrooms where regular exposure to water is common.

In response to this problem, manufacturers have developed waterproof and fully waterproof laminates. Waterproof laminate is a great option for areas where moisture is present and leaks may occur, such as the kitchen. Waterproof laminate, on the other hand, works well in areas with high humidity, such as the bathroom. At Econfloor polska, we offer a wide range of both waterproof and water-resistant laminate flooring to suit the needs of your space.



Laminate flooring cannot be renewed

Hardwood can be refinished repeatedly to look fresh and new. The opposite is true for laminate flooring. Unfortunately, because it has a fibreboard core and a thin layer with a wood (or stone) look on top, it cannot be renewed. When the thin layer wears away, the entire floor will have to be replaced.

Now you can see why laminate flooring is growing in popularity in American homes - it's durable, easy to clean and maintain, has an authentic hardwood aesthetic, isn't very expensive and is DIY-friendly.

Does this make you ready to add laminate to your home? If so, visit one of our locations to choose the perfect laminate flooring for you!



8mm
2999
V-Groove
Standard

Installation

Laminate flooring is fairly easy to install for **do-it-yourselfers**. Laminate flooring is packaged as a series of boards with **protrusions and grooves** that can be snapped one into the other. Sometimes glue is provided for ease of installation. Installed laminate flooring usually 'floats' above the subfloor on a foam / foil backing that provides moisture and sound dampening properties. A small (1-10 millimetres (0.039-0.394 inches)) gap is required between the floor and any immovable object, such as walls, allowing the flooring to develop without obstruction. **Skirting boards** can be removed and then re-installed once the floor is completed for a neater finish, or skirting boards can be left in place with the floor cut to them, and then small mouldings such as moulded skirting boards or larger quarter round skirting boards can be attached to the undersides of the skirting boards. Saw cuts on the boards are usually required at the edges and around cabinet and door entrances, but professional installers usually use saws to undercut door frames to cut a space at a height that allows the floor to pass under the door frame and door casing for a cleaner look.

Incorrect installation can result in unevenness where adjacent boards form an inverted V shape protruding from the floor, or gaps where two adjacent boards are separated.



8mm
2734
V-Groove
Standard

It is important to keep the laminate clean as dust, dirt and sand particles can scratch the surface over time in high traffic areas. It is also important to keep the laminate relatively dry, as water/moisture can cause the boards to swell, warp etc, although some brands come with waterproof coatings. Water spills are not a problem if they are wiped up quickly and do not linger for a long time.

Self-adhesive felt pads are often placed on the legs of furniture on laminate flooring to prevent scratching.

Inferior quality glueless laminate floors can gradually separate, creating visible gaps between the boards. It is important to 'nail' the planks back together with a suitable tool when the gaps are noticed, to prevent the gaps becoming dirty, making them more difficult to lay.

High-quality glueless laminate flooring uses bonding mechanisms that hold the planks together under constant tension, preventing dirt from getting into the gaps and not requiring periodic 'knocking' back together.





8mm
2755
V-Groove
Premium



Guarantee	30 years
Length	1383 mm
Width	193 mm
Thickness	8 mm
Material	HDF board

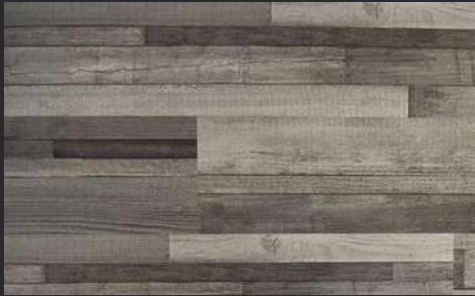
Technical data	Test method	Test result
Abrasion resistance	EN 13329	23/32
	EN 13329	AC4

Packaging:	
Package	9 pcs. = 2.40 m ² = 15.8 kg
Pallet	48 packages = 115,31 m ² = 432 pcs. = 793 kg



COLLECTIONS & DECORS

8mm
Standard
#1050
AC4
1383 x 193 mm
HDF board



8mm
Standard
#1226
AC4
1383 x 193 mm
HDF board



8mm
Standard
#1351
AC4
1383 x 193 mm
HDF board



8mm
Standard
#1380
AC4
1383 x 193 mm
HDF board



8mm
Standard
#1592
AC4
1383 x 193 mm
HDF board



8mm
Standard
#1959
AC4
1383 x 193 mm
HDF board



8mm
Standard
#2733
AC4
1383 x 193 mm
HDF board



8mm
Standard
#3001
AC4
1383 x 193 mm
HDF board





**8mm
Standard
#3000**



Guarantee	30 years
Length	1383 mm
Width	193 mm
Thickness	8 mm
Material	HDF board
Mirocbevelling	4-sided

Technical data	Test method	Test result
Abrasion resistance	EN 13329	23/32
	EN 13329	AC4

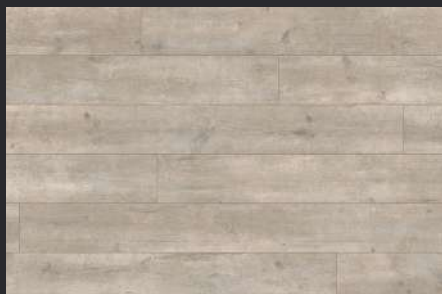
Packaging:

Package	9 pcs. = 2.40 m ² = 15.8 kg
Pallet	48 packages = 115,31 m ² = 432 pcs. = 793 kg

COLLECTIONS & DECORS

8mm V-Groove Standard #1927

AC4
1383 x 193 mm
HDF board



8mm V-Groove Standard #1928

AC4
1383 x 193 mm
HDF board



8mm V-Groove Standard #1946

AC4
1383 x 193 mm
HDF board



8mm V-Groove Standard #1965

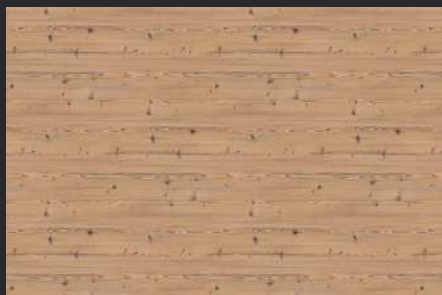
AC4
1383 x 193 mm
HDF board



COLLECTIONS & DECORS

8mm V-Groove Standard #2354

AC4
1383 x 193 mm
HDF board



8mm V-Groove Standard #2524

AC4
1383 x 193 mm
HDF board



8mm V-Groove Standard #2619

AC4
1383 x 193 mm
HDF board



COLLECTIONS & DECORS

8mm V-Groove Standard #2734

AC4
1383 x 193 mm
HDF board



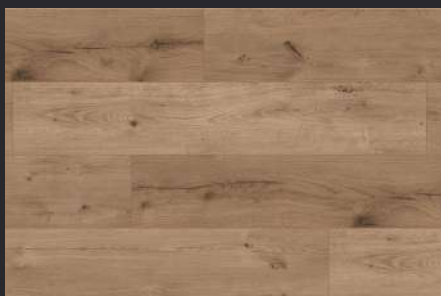
8mm V-Groove Standard #2773

AC4
1383 x 193 mm
HDF board



8mm V-Groove Standard #2999

AC4
1383 x 193 mm
HDF board





8mm
2524
V-Groove
Standard



Guarantee	30 years
Length	1383 mm
Width	159 mm
Thickness	8 mm
Material	HDF board
Mirocbevelling	4-sided

Technical data	Test method	Test result
Abrasion resistance	EN 13329	23/32
	EN 13329	AC4

Packaging:	
Package	10 pcs. = 2.20 m ² = 15 kg
Pallet	55 pcs. = 121 m ² = 825 kg

COLLECTIONS & DECORS

8mm V-Groove Premium #2672

AC4
1383 x 159 mm
HDF board



8mm V-Groove Premium #2755

AC4
1383 x 159 mm
HDF board



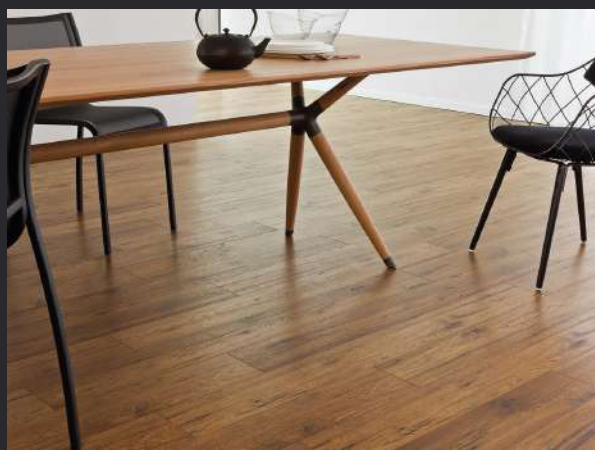
8mm V-Groove Premium #2854

AC4
1383 x 159 mm
HDF board



8mm V-Groove Premium #3134

AC4
1383 x 159 mm
HDF board





Guarantee	30 years
Length	1383 mm
Width	244 mm
Thickness	8 mm
Material	HDF board
Mirocbevelling	4-sided

Technical data	Test method	Test result
Abrasion resistance	EN 13329	23/32
	EN 13329	AC4

Packaging:	
Package	7 pcs. = 2.36 m ² = 15.6 kg
Pallet	45 pcs. = 106.3 m ² = 741 kg

COLLECTIONS & DECORS

8mm V-Groove
Wide planks
#1916

AC4
1383 x 244 mm
HDF board



8mm V-Groove
Wide planks
#1920

AC4
1383 x 244 mm
HDF board



8mm V-Groove
Wide planks
#2722

AC4
1383 x 244 mm
HDF board



COLLECTIONS & DECORS

8mm V-Groove
Wide planks
#3146

AC4
1383 x 244 mm
HDF board



8mm V-Groove
Wide planks
#3147

AC4
1383 x 244 mm
HDF board





8mm
1928
V-Groove
Standard



Guarantee	20 years
Length	630 mm
Width	126 mm
Thickness	8 mm
Material	Rochester oak
Mirocbevelling	4-sided
HDF media	AQUApro (waterpfoof)

Technical data	Test method	Test result
	EN 13329	23/32
Abrasion resistance	EN 13329	AC5

Packaging:	
Package	11 pcs. = 0.87 m ² = 5.80 kg
Pallet	96 pcs. = 83.83 m ² = 585 kg

COLLECTIONS & DECORS

8mm V-Groove Herringbone #2950

AC5
630 x 126 mm
AQUApro HDF



8mm V-Groove Herringbone #3142

AC5
630 x 126 mm
AQUApro HDF





8mm
V-Groove
1040



Guarantee	30 years
Length	1383 mm
Width	193 mm
Thickness	10 mm
Material	HDF board
Mirocbevelling	4-sided

Technical data	Test method	Test result
Abrasion resistance	EN 13329	23/33
	EN 13329	AC5

Packaging:	
Package	8 pcs. = 2,14 m ² = 18,1 kg
Pallet	44 pcs. = 93,96 m ² = 813 kg

COLLECTIONS & DECORS

10 mm
#2646

AC5
1383 x 193 mm
HDF board



10 mm
#2769

AC5
1383 x 193 mm
HDF board



10 mm
#2772

AC5
1383 x 193 mm
HDF board



COLLECTIONS & DECORS

10 mm
#2937

AC5
1383 x 193 mm
HDF board



10 mm
#2938

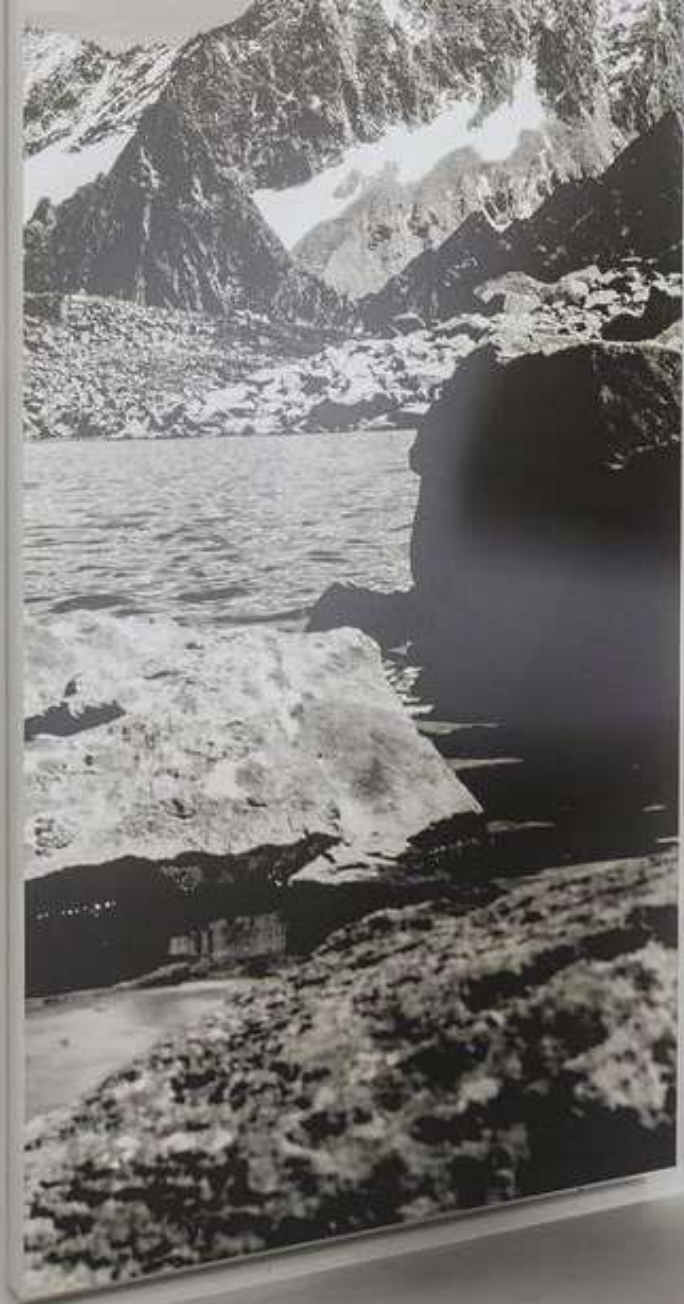
AC5
1383 x 193 mm
HDF board



10 mm
#3271

AC5
1383 x 193 mm
HDF board







Our credo is to produce strong, durable and long-lasting flooring for residential and commercial areas, with the most natural look possible, and made of high-quality materials.

We look forward to welcoming you in our stores.

VINYL, LAMINATE, PRE-FINISHED PARQUET AND SOLID PARQUET FLOORS

Grel 77 | 34-471 Ludźmierz | Poland | www.econfloorpolska.com
sale@econfloorpolska.com | Tel.: +48 182 005 180

